

The address of our Headquarters is:

**Amber Valley Borough Council**  
 Town Hall, Market Place, RIPLEY,  
 Derbyshire DE5 3XE  
**Tel:** 01773 570222  
**Fax:** 01773 841343

**E-mail:** enquiry@ambervalley.gov.uk  
**Website:** www.ambervalley.gov.uk

Switchboard and Reception Opening Hours  
 9.00am - 4.30pm Monday, Tuesday,  
 Thursday and Friday.  
 10.00am - 4.30pm Wednesday



A Minicom telephone system for hearing impaired people is now in operation at the Council.  
 Please dial 01773 841490

**EMERGENCY NUMBER**

**Out of office hours only - 01773 841414**  
 ONLY TO BE USED IN A REAL EMERGENCY -  
 THREAT TO LIFE OR PROPERTY

Direct Dial Helplines between 9.00am - 4.30pm Monday,  
 Tuesday, Thursday and Friday.  
 10.00am - 4.30pm Wednesday

Council Tax Recovery	01773 841445
Business Rates	01773 841444
Benefits/Council Tax	01773 841470
Refuse Collection	01773 841326

**NEEDLES HOTLINE NUMBER IS OPEN 24 HOURS - 0800 0925131**

**OUR TOWN CENTRE OFFICES**

Payments and enquiries are at:  
 Alfreton House, High Street, Alfreton  
 King Street, Belper  
 Market Place, Heanor  
 Opening hours: Monday, Tuesday, Thursday,  
 Friday 9.00am - 4.30pm  
 Wednesday 9.00am - 1.30pm  
 Market Place, Ripley  
 Opening hours: Monday - Friday  
 9.00am - 4.30pm

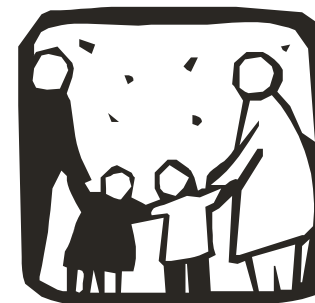


JANUARY 2009

DESIGNED & PUBLISHED BY AMBER VALLEY BOROUGH COUNCIL

**HELPING YOU**

*to find  
 Amber Valley  
 Borough Council  
 offices in Ripley*



*number 14*



AMBER VALLEY  
 BOROUGH COUNCIL

*Caring & Working for Amber Valley*

# HOW TO FIND US

## BY ROAD

From the north and south, the M1 runs parallel to the eastern boundary with access at junctions 26, 27 and 28. The M6 gives access to major trunk roads via the A52 and the Borough is crossed by the A38 and A6.

## BY RAIL

There are stations at Duffield, Belper, Ambergate and Whatstandwell on the Derby/Matlock line and at Langley Mill and Alfreton on the Nottingham/Sheffield line. For information telephone 08457 484950.

## BY COACH

For up to date information on local services telephone Traveline 0870 6082608

## BY AIR

1. East Midlands International Airport - 01332 852852
2. Birmingham International Airport 08707 335511
3. Manchester International Airport 0161 4893000

## VISITORS' PARKING

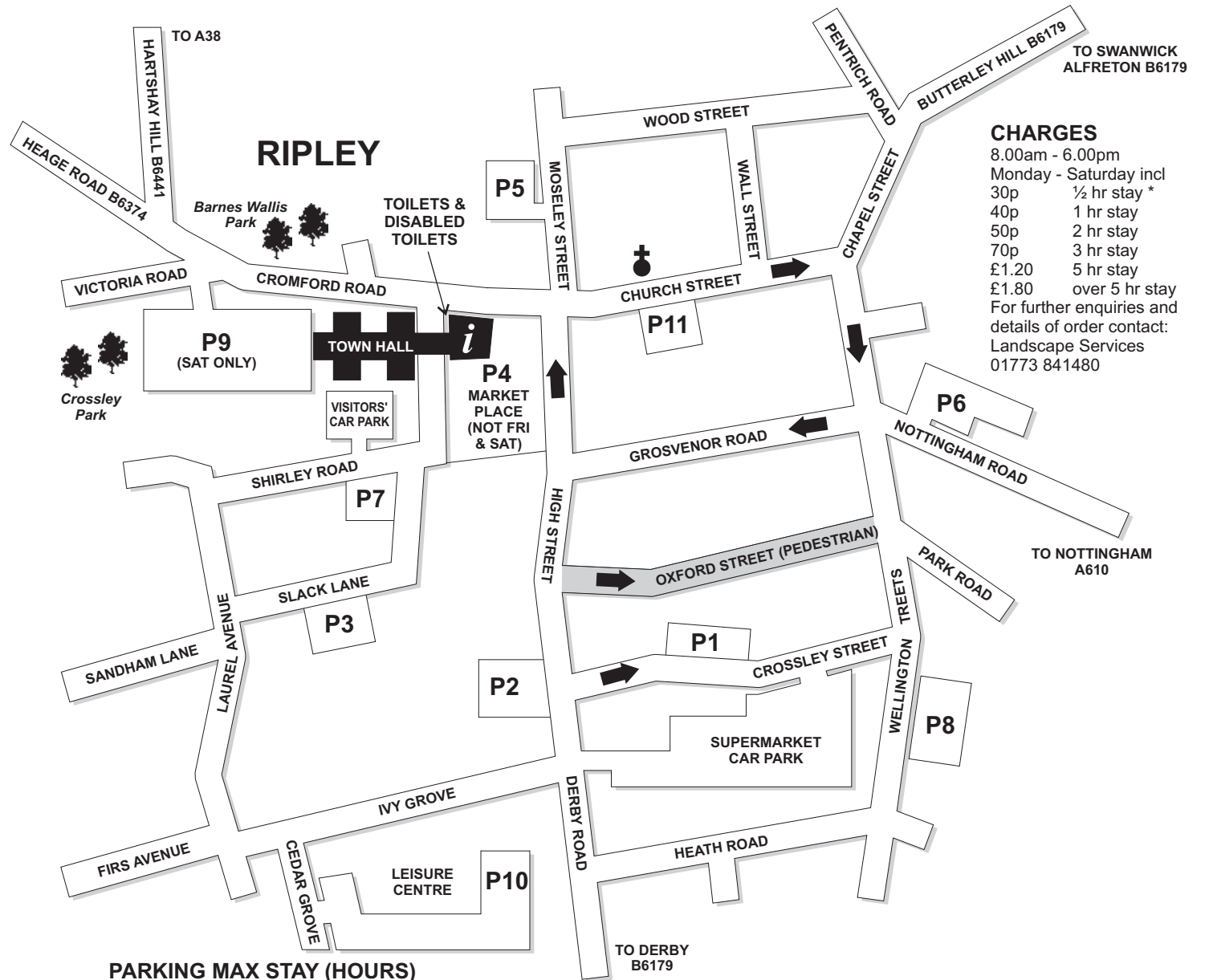
Access to the only visitors' car park is off Shirley Road.

Visitors should report to Main Reception on the ground floor and register their vehicle if parked in the Visitors' car park.

The entrance to the Council Offices is from the Market Place.

Visitor passes are available from Main Reception.

Short Stay Pay & Display parking (Maximum 3 hour) is available on the Market Place between 8.00am and 6.00pm Monday to Wednesday and 8.00am to 4.30pm Thursday.



## CHARGES

8.00am - 6.00pm  
 Monday - Saturday incl  
 30p ½ hr stay \*  
 40p 1 hr stay  
 50p 2 hr stay  
 70p 3 hr stay  
 £1.20 5 hr stay  
 £1.80 over 5 hr stay  
 For further enquiries and details of order contact:  
 Landscape Services  
 01773 841480

## PARKING MAX STAY (HOURS)

<b>P1</b>	Crossley St	3hrs	6 spaces, <b>Red</b>	<b>P7</b>	Shirley Road	10hrs	28 spaces, <b>Blue</b>
<b>P2</b>	Malthouse Yard	3hrs	61 spaces, <b>Red</b>	<b>P8</b>	Wellington St	10hrs	20 spaces, <b>Blue</b>
<b>P3</b>	Slack Lane	10hrs	20 spaces, <b>Blue</b>	<b>P9</b>	Town Hall (Sat only)	10hrs	199 spaces, <b>Blue</b>
<b>P4</b>	Market Place *	3hrs	63 spaces, <b>Red</b>	<b>P10</b>	Leisure Centre East	10hrs	36 spaces
<b>P5</b>	Moseley St	10hrs	43 spaces, <b>Blue</b>	<b>P11</b>	Church Street	3hrs	17 spaces, <b>Red</b>
<b>P6</b>	Nottingham Rd	3hrs	55 spaces, <b>Red</b>				

\* Pay for 1 hour and get 1 hour free between 12.00 noon and 2.00pm.

All car parks are free to residents after 4.00pm, must display validated permit available from Town Centre office.

Free car parking for over 60's after 2.00pm, Tuesdays and Thursdays, must display validated permit available from Town Centre office.